



## Division of Criminal Justice Services

New York State Crime Update  
January – June 2007 vs. 2006

*Preliminary Data*

This report provides the most recent information available on the number of Index crimes of murder, rape, robbery, aggravated assault, burglary, larceny and motor vehicle theft reported within New York State. These figures include all agencies with complete reporting as of December 14, 2007, and represent approximately 99 percent of crime data for the first half of 2007. All data are preliminary and subject to change.

Detailed information on crime data for each reporting agency from 2002 through 2006 is available on the DCJS website: <http://criminaljustice.state.ny.us/crimnet/ojsa/indexcrimes/counties.htm>

**ELIOT SPITZER**  
Governor

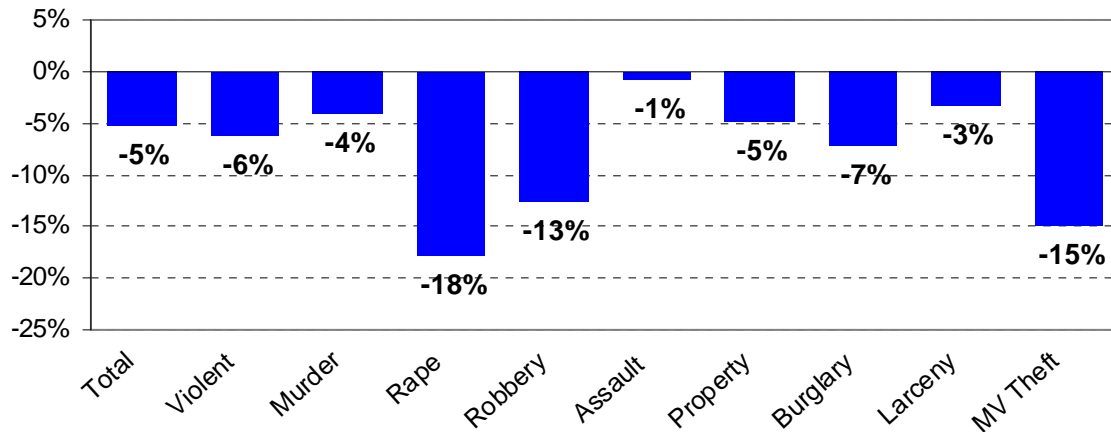
**DENISE E. O'DONNELL**  
Commissioner, DCJS

Crimestat Report

Issued: January 7, 2008

Figure 1

## New York State Percentage Change in Index Crimes January - June 2007 vs. 2006



- Figure 1 above shows that Index crime in New York State continues to trend below 2006 levels, and is down 5% during the first six months of 2007. Both violent and property crime categories declined, led by double-digit decreases in rapes, robberies and motor vehicle thefts.
- Table 1 shows the number of reported Index crimes by region. New York City reported declines of 5% in violent crimes and 4% in property crimes. Within New York City, aggravated assault was the only crime category to rise during the first six months of the year, and that growth was less than 1%.
- Table 1 also shows that an estimated 99% of crime reports have been received by Non-New York City counties for the first six months of 2007. These counties reported an 8% drop in violent crimes and a 6% decrease in property crimes. Murders are up 10%, with 154 reported, as compared to 140 for the same period in 2006.
- Table 2 provides the number of reported Index crimes for each county. A total of 41 counties are reporting a decrease in overall crime, and 36 are reporting a decrease in violent crime.
- Table 3 provides an Index crime summary for the 17 primary Operation IMPACT jurisdictions. Among IMPACT jurisdictions, violent crimes declined 12% and property crimes fell 5%. These decreases were driven by an 18% drop in robberies and a 12% drop in motor vehicle thefts.

Table 1  
Uniform Crime/Incident-Based Reporting

Index Crimes Reported to Police  
January - June 2006 vs. 2007

(includes only agencies with 6 months complete reporting for both years)

|  | 6 mos. | Total          | Violent       | Murder | Rape   | Robbery | Agg.<br>Assault | Property       | Burglary | Larceny | MV<br>Theft |
|--|--------|----------------|---------------|--------|--------|---------|-----------------|----------------|----------|---------|-------------|
| <b>New York City</b><br>(100% coverage)      | 2006   | <b>98,809</b>  | <b>25,132</b> | 266    | 662    | 10,842  | 13,362          | <b>73,677</b>  | 10,489   | 55,367  | 7,821       |
|  | 2007   | <b>94,772</b>  | <b>23,887</b> | 235    | 420    | 9,759   | 13,473          | <b>70,885</b>  | 9,786    | 54,864  | 6,235       |
|  | %chg   | <b>-4.1%</b>   | <b>-5.0%</b>  | -11.7% | -36.6% | -10.0%  | 0.8%            | <b>-3.8%</b>   | -6.7%    | -0.9%   | -20.3%      |
| <b>Non-New York City</b><br>(98.6% coverage) | 2006   | <b>125,258</b> | <b>15,398</b> | 140    | 1,098  | 5,139   | 9,021           | <b>109,860</b> | 20,642   | 81,512  | 7,706       |
|  | 2007   | <b>117,721</b> | <b>14,094</b> | 154    | 1,026  | 4,194   | 8,720           | <b>103,627</b> | 19,085   | 77,564  | 6,978       |
|  | %chg   | <b>-6.0%</b>   | <b>-8.5%</b>  | 10.0%  | -6.6%  | -18.4%  | -3.3%           | <b>-5.7%</b>   | -7.5%    | -4.8%   | -9.4%       |
| <b>New York State</b><br>(99.2% coverage)    | 2006   | <b>224,067</b> | <b>40,530</b> | 406    | 1,760  | 15,981  | 22,383          | <b>183,537</b> | 31,131   | 136,879 | 15,527      |
|  | 2007   | <b>212,493</b> | <b>37,981</b> | 389    | 1,446  | 13,953  | 22,193          | <b>174,512</b> | 28,871   | 132,428 | 13,213      |
|  | %chg   | <b>-5.2%</b>   | <b>-6.3%</b>  | -4.2%  | -17.8% | -12.7%  | -0.8%           | <b>-4.9%</b>   | -7.3%    | -3.3%   | -14.9%      |

Source: Uniform Crime/Incident Based Reporting systems (as of 12/14/07).

Coverage refers to the proportion of 2006 Index crimes the included agencies represented.

Table 2  
Uniform Crime/Incident-Based Reporting  
Index Crime Summary  
January - June 2006 vs. 2007

(includes only agencies with 6 months complete reporting for both years as of 12/14/07)

| County                            | Jan-June | Total  | Violent | Murder | Rape   | Robbery | Agg.    |          |          | Larceny | MV<br>Theft |
|-----------------------------------|----------|--------|---------|--------|--------|---------|---------|----------|----------|---------|-------------|
|                                   |          |        |         |        |        |         | Assault | Property | Burglary |         |             |
| Albany<br>( 99.3% coverage)       | 2006     | 5,625  | 732     | 4      | 34     | 211     | 483     | 4,893    | 800      | 3,890   | 203         |
|                                   | 2007     | 5,023  | 730     | 2      | 39     | 207     | 482     | 4,293    | 733      | 3,348   | 212         |
|                                   | % change | -10.7% | -0.3%   | -50.0% | 14.7%  | -1.9%   | -0.2%   | -12.3%   | -8.4%    | -13.9%  | 4.4%        |
| Allegany<br>( 88.0% coverage)     | 2006     | 370    | 70      | 0      | 8      | 1       | 61      | 300      | 54       | 240     | 6           |
|                                   | 2007     | 278    | 46      | 1      | 3      | 1       | 41      | 232      | 73       | 150     | 9           |
|                                   | % change | -24.9% | -34.3%  |        | -62.5% | 0.0%    | -32.8%  | -22.7%   | 35.2%    | -37.5%  | 50.0%       |
| Broome<br>( 96.6% coverage)       | 2006     | 2,974  | 227     | 0      | 37     | 51      | 139     | 2,747    | 417      | 2,286   | 44          |
|                                   | 2007     | 2,832  | 213     | 2      | 28     | 51      | 132     | 2,619    | 363      | 2,197   | 59          |
|                                   | % change | -4.8%  | -6.2%   |        | -24.3% | 0.0%    | -5.0%   | -4.7%    | -12.9%   | -3.9%   | 34.1%       |
| Cattaraugus<br>( 100.0% coverage) | 2006     | 1,129  | 92      | 0      | 8      | 12      | 72      | 1,037    | 223      | 796     | 18          |
|                                   | 2007     | 966    | 89      | 0      | 10     | 14      | 65      | 877      | 198      | 647     | 32          |
|                                   | % change | -14.4% | -3.3%   |        | 25.0%  | 16.7%   | -9.7%   | -15.4%   | -11.2%   | -18.7%  | 77.8%       |
| Cayuga<br>( 100.0% coverage)      | 2006     | 897    | 60      | 0      | 5      | 11      | 44      | 837      | 158      | 657     | 22          |
|                                   | 2007     | 847    | 106     | 0      | 14     | 14      | 78      | 741      | 121      | 597     | 23          |
|                                   | % change | -5.6%  | 76.7%   |        | 180.0% | 27.3%   | 77.3%   | -11.5%   | -23.4%   | -9.1%   | 4.5%        |
| Chautauqua<br>( 100.0% coverage)  | 2006     | 1,732  | 156     | 0      | 25     | 26      | 105     | 1,576    | 352      | 1,180   | 44          |
|                                   | 2007     | 1,698  | 174     | 1      | 32     | 23      | 118     | 1,524    | 343      | 1,139   | 42          |
|                                   | % change | -2.0%  | 11.5%   |        | 28.0%  | -11.5%  | 12.4%   | -3.3%    | -2.6%    | -3.5%   | -4.5%       |
| Chemung<br>( 100.0% coverage)     | 2006     | 1,231  | 81      | 1      | 13     | 27      | 40      | 1,150    | 205      | 914     | 31          |
|                                   | 2007     | 1,169  | 91      | 1      | 6      | 14      | 70      | 1,078    | 186      | 860     | 32          |
|                                   | % change | -5.0%  | 12.3%   | 0.0%   | -53.8% | -48.1%  | 75.0%   | -6.3%    | -9.3%    | -5.9%   | 3.2%        |
| Chenango<br>( 96.6% coverage)     | 2006     | 500    | 57      | 0      | 9      | 1       | 47      | 443      | 97       | 336     | 10          |
|                                   | 2007     | 422    | 27      | 3      | 9      | 0       | 15      | 395      | 75       | 305     | 15          |
|                                   | % change | -15.6% | -52.6%  |        | 0.0%   | -100.0% | -68.1%  | -10.8%   | -22.7%   | -9.2%   | 50.0%       |
| Clinton<br>( 100.0% coverage)     | 2006     | 848    | 65      | 1      | 14     | 3       | 47      | 783      | 181      | 589     | 13          |
|                                   | 2007     | 991    | 134     | 1      | 10     | 6       | 117     | 857      | 207      | 626     | 24          |
|                                   | % change | 16.9%  | 106.2%  | 0.0%   | -28.6% | 100.0%  | 148.9%  | 9.5%     | 14.4%    | 6.3%    | 84.6%       |
| Columbia<br>( 64.0% coverage)     | 2006     | 421    | 34      | 3      | 7      | 4       | 20      | 387      | 96       | 286     | 5           |
|                                   | 2007     | 392    | 40      | 1      | 2      | 5       | 32      | 352      | 79       | 259     | 14          |
|                                   | % change | -6.9%  | 17.6%   | -66.7% | -71.4% | 25.0%   | 60.0%   | -9.0%    | -17.7%   | -9.4%   | 180.0%      |
| Cortland<br>( 100.0% coverage)    | 2006     | 612    | 65      | 0      | 13     | 7       | 45      | 547      | 93       | 441     | 13          |
|                                   | 2007     | 606    | 63      | 0      | 8      | 3       | 52      | 543      | 92       | 438     | 13          |
|                                   | % change | -1.0%  | -3.1%   |        | -38.5% | -57.1%  | 15.6%   | -0.7%    | -1.1%    | -0.7%   | 0.0%        |
| Delaware<br>( 100.0% coverage)    | 2006     | 372    | 39      | 1      | 5      | 1       | 32      | 333      | 83       | 237     | 13          |
|                                   | 2007     | 395    | 50      | 1      | 8      | 2       | 39      | 345      | 130      | 206     | 9           |
|                                   | % change | 6.2%   | 28.2%   | 0.0%   | 60.0%  | 100.0%  | 21.9%   | 3.6%     | 56.6%    | -13.1%  | -30.8%      |
| Dutchess<br>( 99.4% coverage)     | 2006     | 2,844  | 414     | 3      | 21     | 120     | 270     | 2,430    | 429      | 1,885   | 116         |
|                                   | 2007     | 2,851  | 438     | 10     | 23     | 120     | 285     | 2,413    | 346      | 1,949   | 118         |
|                                   | % change | 0.2%   | 5.8%    | 233.3% | 9.5%   | 0.0%    | 5.6%    | -0.7%    | -19.3%   | 3.4%    | 1.7%        |
| Erie<br>( 100.0% coverage)        | 2006     | 14,962 | 2,563   | 36     | 151    | 1,005   | 1,371   | 12,399   | 2,966    | 8,174   | 1,259       |
|                                   | 2007     | 15,018 | 2,116   | 26     | 128    | 806     | 1,156   | 12,902   | 2,846    | 8,793   | 1,263       |
|                                   | % change | 0.4%   | -17.4%  | -27.8% | -15.2% | -19.8%  | -15.7%  | 4.1%     | -4.0%    | 7.6%    | 0.3%        |
| Essex<br>( 99.5% coverage)        | 2006     | 277    | 29      | 0      | 1      | 0       | 28      | 248      | 66       | 175     | 7           |
|                                   | 2007     | 237    | 44      | 0      | 6      | 0       | 38      | 193      | 55       | 127     | 11          |
|                                   | % change | -14.4% | 51.7%   |        | 500.0% |         | 35.7%   | -22.2%   | -16.7%   | -27.4%  | 57.1%       |
| Franklin<br>( 100.0% coverage)    | 2006     | 459    | 82      | 0      | 9      | 0       | 73      | 377      | 148      | 216     | 13          |
|                                   | 2007     | 490    | 82      | 0      | 11     | 0       | 71      | 408      | 142      | 250     | 16          |
|                                   | % change | 6.8%   | 0.0%    |        | 22.2%  |         | -2.7%   | 8.2%     | -4.1%    | 15.7%   | 23.1%       |
| Fulton<br>( 100.0% coverage)      | 2006     | 630    | 43      | 0      | 7      | 3       | 33      | 587      | 128      | 430     | 29          |
|                                   | 2007     | 766    | 69      | 1      | 10     | 3       | 55      | 697      | 158      | 516     | 23          |
|                                   | % change | 21.6%  | 60.5%   |        | 42.9%  | 0.0%    | 66.7%   | 18.7%    | 23.4%    | 20.0%   | -20.7%      |

Table 2  
Uniform Crime/Incident-Based Reporting  
Index Crime Summary  
January - June 2006 vs. 2007

(includes only agencies with 6 months complete reporting for both years as of 12/14/07)

| County                           | Jan-June | Total  | Violent | Murder  | Rape    | Robbery | Agg.    |          |          | Larceny | MV<br>Theft |
|----------------------------------|----------|--------|---------|---------|---------|---------|---------|----------|----------|---------|-------------|
|                                  |          |        |         |         |         |         | Assault | Property | Burglary |         |             |
| Genesee<br>( 100.0% coverage)    | 2006     | 861    | 55      | 0       | 10      | 6       | 39      | 806      | 142      | 649     | 15          |
|                                  | 2007     | 624    | 42      | 0       | 8       | 4       | 30      | 582      | 96       | 472     | 14          |
|                                  | % change | -27.5% | -23.6%  |         | -20.0%  | -33.3%  | -23.1%  | -27.8%   | -32.4%   | -27.3%  | -6.7%       |
| Greene<br>( 97.5 % coverage)     | 2006     | 441    | 97      | 2       | 6       | 2       | 87      | 344      | 96       | 229     | 19          |
|                                  | 2007     | 483    | 88      | 0       | 9       | 2       | 77      | 395      | 102      | 279     | 14          |
|                                  | % change | 9.5%   | -9.3%   | -100.0% | 50.0%   | 0.0%    | -11.5%  | 14.8%    | 6.3%     | 21.8%   | -26.3%      |
| Hamilton<br>( 100.0% coverage)   | 2006     | 23     | 1       | 0       | 0       | 0       | 1       | 22       | 2        | 20      | 0           |
|                                  | 2007     | 23     | 1       | 0       | 0       | 0       | 1       | 22       | 10       | 12      | 0           |
|                                  | % change | 0.0%   | 0.0%    |         |         |         | 0.0%    | 0.0%     | 400.0%   | -40.0%  |             |
| Herkimer<br>( 97.3% coverage)    | 2006     | 659    | 100     | 0       | 10      | 2       | 88      | 559      | 111      | 433     | 15          |
|                                  | 2007     | 577    | 85      | 0       | 6       | 3       | 76      | 492      | 136      | 349     | 7           |
|                                  | % change | -12.4% | -15.0%  |         | -40.0%  | 50.0%   | -13.6%  | -12.0%   | 22.5%    | -19.4%  | -53.3%      |
| Jefferson<br>( 99.4% coverage)   | 2006     | 1,356  | 138     | 0       | 12      | 19      | 107     | 1,218    | 229      | 933     | 56          |
|                                  | 2007     | 1,170  | 148     | 1       | 33      | 15      | 99      | 1,022    | 185      | 789     | 48          |
|                                  | % change | -13.7% | 7.2%    |         | 175.0%  | -21.1%  | -7.5%   | -16.1%   | -19.2%   | -15.4%  | -14.3%      |
| Lewis<br>( 100.0% coverage)      | 2006     | 185    | 13      | 0       | 2       | 0       | 11      | 172      | 84       | 80      | 8           |
|                                  | 2007     | 210    | 48      | 0       | 36      | 0       | 12      | 162      | 59       | 102     | 1           |
|                                  | % change | 13.5%  | 269.2%  |         | 1700.0% |         | 9.1%    | -5.8%    | -29.8%   | 27.5%   | -87.5%      |
| Livingston<br>( 100.0% coverage) | 2006     | 918    | 42      | 1       | 11      | 2       | 28      | 876      | 88       | 775     | 13          |
|                                  | 2007     | 775    | 29      | 0       | 7       | 2       | 20      | 746      | 84       | 651     | 11          |
|                                  | % change | -15.6% | -31.0%  | -100.0% | -36.4%  | 0.0%    | -28.6%  | -14.8%   | -4.5%    | -16.0%  | -15.4%      |
| Madison<br>( 91.2% coverage)     | 2006     | 542    | 30      | 0       | 8       | 2       | 20      | 512      | 117      | 382     | 13          |
|                                  | 2007     | 577    | 30      | 0       | 7       | 1       | 22      | 547      | 117      | 416     | 14          |
|                                  | % change | 6.5%   | 0.0%    |         | -12.5%  | -50.0%  | 10.0%   | 6.8%     | 0.0%     | 8.9%    | 7.7%        |
| Monroe<br>( 100.0% coverage)     | 2006     | 12,934 | 1,543   | 20      | 80      | 712     | 731     | 11,391   | 1,869    | 7,991   | 1,531       |
|                                  | 2007     | 11,328 | 1,361   | 28      | 70      | 507     | 756     | 9,967    | 1,787    | 7,089   | 1,091       |
|                                  | % change | -12.4% | -11.8%  | 40.0%   | -12.5%  | -28.8%  | 3.4%    | -12.5%   | -4.4%    | -11.3%  | -28.7%      |
| Montgomery<br>( 90.9% coverage)  | 2006     | 410    | 56      | 0       | 2       | 1       | 53      | 354      | 60       | 287     | 7           |
|                                  | 2007     | 333    | 53      | 1       | 1       | 0       | 51      | 280      | 59       | 210     | 11          |
|                                  | % change | -18.8% | -5.4%   |         | -50.0%  | -100.0% | -3.8%   | -20.9%   | -1.7%    | -26.8%  | 57.1%       |
| Nassau<br>( 100.0% coverage)     | 2006     | 9,884  | 1,212   | 5       | 48      | 588     | 571     | 8,672    | 1,340    | 6,538   | 794         |
|                                  | 2007     | 9,341  | 1,114   | 7       | 46      | 488     | 573     | 8,227    | 1,206    | 6,326   | 695         |
|                                  | % change | -5.5%  | -8.1%   | 40.0%   | -4.2%   | -17.0%  | 0.4%    | -5.1%    | -10.0%   | -3.2%   | -12.5%      |
| Niagara<br>( 99.8% coverage)     | 2006     | 3,347  | 448     | 3       | 34      | 132     | 279     | 2,899    | 716      | 2,000   | 183         |
|                                  | 2007     | 3,175  | 370     | 1       | 33      | 95      | 241     | 2,805    | 637      | 1,977   | 191         |
|                                  | % change | -5.1%  | -17.4%  | -66.7%  | -2.9%   | -28.0%  | -13.6%  | -3.2%    | -11.0%   | -1.2%   | 4.4%        |
| Oneida<br>( 96.7% coverage)      | 2006     | 2,778  | 314     | 5       | 20      | 73      | 216     | 2,464    | 604      | 1,735   | 125         |
|                                  | 2007     | 2,928  | 339     | 5       | 19      | 68      | 247     | 2,589    | 618      | 1,848   | 123         |
|                                  | % change | 5.4%   | 8.0%    | 0.0%    | -5.0%   | -6.8%   | 14.4%   | 5.1%     | 2.3%     | 6.5%    | -1.6%       |
| Onondaga<br>( 97.4% coverage)    | 2006     | 6,560  | 954     | 12      | 45      | 316     | 581     | 5,606    | 1,268    | 3,893   | 445         |
|                                  | 2007     | 5,694  | 850     | 11      | 47      | 236     | 556     | 4,844    | 1,119    | 3,374   | 351         |
|                                  | % change | -13.2% | -10.9%  | -8.3%   | 4.4%    | -25.3%  | -4.3%   | -13.6%   | -11.8%   | -13.3%  | -21.1%      |
| Ontario<br>( 88.0% coverage)     | 2006     | 808    | 62      | 0       | 19      | 14      | 29      | 746      | 158      | 550     | 38          |
|                                  | 2007     | 739    | 40      | 0       | 5       | 4       | 31      | 699      | 148      | 528     | 23          |
|                                  | % change | -8.5%  | -35.5%  |         | -73.7%  | -71.4%  | 6.9%    | -6.3%    | -6.3%    | -4.0%   | -39.5%      |
| Orange<br>( 99.6% coverage)      | 2006     | 3,952  | 484     | 1       | 31      | 168     | 284     | 3,468    | 590      | 2,720   | 158         |
|                                  | 2007     | 4,123  | 514     | 4       | 43      | 158     | 309     | 3,609    | 561      | 2,902   | 146         |
|                                  | % change | 4.3%   | 6.2%    | 300.0%  | 38.7%   | -6.0%   | 8.8%    | 4.1%     | -4.9%    | 6.7%    | -7.6%       |
| Orleans<br>( 93.5% coverage)     | 2006     | 408    | 39      | 0       | 2       | 5       | 32      | 369      | 83       | 271     | 15          |
|                                  | 2007     | 441    | 44      | 1       | 2       | 5       | 36      | 397      | 84       | 295     | 18          |
|                                  | % change | 8.1%   | 12.8%   |         | 0.0%    | 0.0%    | 12.5%   | 7.6%     | 1.2%     | 8.9%    | 20.0%       |

Table 2  
Uniform Crime/Incident-Based Reporting  
Index Crime Summary  
January - June 2006 vs. 2007

(includes only agencies with 6 months complete reporting for both years as of 12/14/07)

| County                            | Jan-June | Total  | Violent | Murder  | Rape    | Robbery | Agg.    |          |          | Larceny | MV Theft |
|-----------------------------------|----------|--------|---------|---------|---------|---------|---------|----------|----------|---------|----------|
|                                   |          |        |         |         |         |         | Assault | Property | Burglary |         |          |
| Oswego<br>( 98.5% coverage)       | 2006     | 1,163  | 64      | 0       | 12      | 10      | 42      | 1,099    | 223      | 854     | 22       |
|                                   | 2007     | 1,187  | 86      | 0       | 12      | 17      | 57      | 1,101    | 239      | 836     | 26       |
|                                   | % change | 2.1%   | 34.4%   |         | 0.0%    | 70.0%   | 35.7%   | 0.2%     | 7.2%     | -2.1%   | 18.2%    |
| Otsego<br>( 100.0% coverage)      | 2006     | 606    | 92      | 1       | 21      | 10      | 60      | 514      | 114      | 391     | 9        |
|                                   | 2007     | 567    | 49      | 1       | 7       | 3       | 38      | 518      | 143      | 362     | 13       |
|                                   | % change | -6.4%  | -46.7%  | 0.0%    | -66.7%  | -70.0%  | -36.7%  | 0.8%     | 25.4%    | -7.4%   | 44.4%    |
| Putnam<br>( 100.0% coverage)      | 2006     | 483    | 50      | 0       | 2       | 12      | 36      | 433      | 81       | 343     | 9        |
|                                   | 2007     | 434    | 35      | 3       | 5       | 5       | 22      | 399      | 60       | 319     | 20       |
|                                   | % change | -10.1% | -30.0%  |         | 150.0%  | -58.3%  | -38.9%  | -7.9%    | -25.9%   | -7.0%   | 122.2%   |
| Rensselaer<br>( 99.7% coverage)   | 2006     | 2,147  | 257     | 1       | 26      | 60      | 170     | 1,890    | 411      | 1,366   | 113      |
|                                   | 2007     | 2,130  | 263     | 4       | 22      | 82      | 155     | 1,867    | 416      | 1,328   | 123      |
|                                   | % change | -0.8%  | 2.3%    | 300.0%  | -15.4%  | 36.7%   | -8.8%   | -1.2%    | 1.2%     | -2.8%   | 8.8%     |
| Rockland<br>( 100.0% coverage)    | 2006     | 2,225  | 239     | 2       | 15      | 61      | 161     | 1,986    | 274      | 1,626   | 86       |
|                                   | 2007     | 2,101  | 262     | 1       | 17      | 81      | 163     | 1,839    | 234      | 1,514   | 91       |
|                                   | % change | -5.6%  | 9.6%    | -50.0%  | 13.3%   | 32.8%   | 1.2%    | -7.4%    | -14.6%   | -6.9%   | 5.8%     |
| Saratoga<br>( 98.3% coverage)     | 2006     | 1,483  | 118     | 1       | 17      | 10      | 90      | 1,365    | 230      | 1,098   | 37       |
|                                   | 2007     | 1,316  | 104     | 0       | 16      | 12      | 76      | 1,212    | 220      | 947     | 45       |
|                                   | % change | -11.3% | -11.9%  | -100.0% | -5.9%   | 20.0%   | -15.6%  | -11.2%   | -4.3%    | -13.8%  | 21.6%    |
| Schenectady<br>( 100.0% coverage) | 2006     | 2,979  | 391     | 4       | 29      | 150     | 208     | 2,588    | 626      | 1,781   | 181      |
|                                   | 2007     | 2,558  | 331     | 2       | 22      | 132     | 175     | 2,227    | 500      | 1,546   | 181      |
|                                   | % change | -14.1% | -15.3%  | -50.0%  | -24.1%  | -12.0%  | -15.9%  | -13.9%   | -20.1%   | -13.2%  | 0.0%     |
| Schoharie<br>( 81.3% coverage)    | 2006     | 184    | 16      | 0       | 3       | 1       | 12      | 168      | 26       | 134     | 8        |
|                                   | 2007     | 180    | 11      | 0       | 1       | 1       | 9       | 169      | 42       | 121     | 6        |
|                                   | % change | -2.2%  | -31.3%  |         | -66.7%  | 0.0%    | -25.0%  | 0.6%     | 61.5%    | -9.7%   | -25.0%   |
| Schuyler<br>( 100.0% coverage)    | 2006     | 87     | 7       | 0       | 2       | 0       | 5       | 80       | 16       | 58      | 6        |
|                                   | 2007     | 71     | 4       | 0       | 0       | 0       | 4       | 67       | 16       | 48      | 3        |
|                                   | % change | -18.4% | -42.9%  |         | -100.0% |         | -20.0%  | -16.3%   | 0.0%     | -17.2%  | -50.0%   |
| Seneca<br>( 92.9% coverage)       | 2006     | 274    | 13      | 0       | 1       | 0       | 12      | 261      | 34       | 219     | 8        |
|                                   | 2007     | 228    | 12      | 0       | 1       | 0       | 11      | 216      | 23       | 188     | 5        |
|                                   | % change | -16.8% | -7.7%   |         | 0.0%    |         | -8.3%   | -17.2%   | -32.4%   | -14.2%  | -37.5%   |
| St. Lawrence<br>( 95.2% coverage) | 2006     | 1,197  | 78      | 0       | 20      | 6       | 52      | 1,119    | 223      | 864     | 32       |
|                                   | 2007     | 989    | 73      | 1       | 11      | 3       | 58      | 916      | 168      | 732     | 16       |
|                                   | % change | -17.4% | -6.4%   |         | -45.0%  | -50.0%  | 11.5%   | -18.1%   | -24.7%   | -15.3%  | -50.0%   |
| Steuben<br>( 99.4% coverage)      | 2006     | 846    | 133     | 0       | 54      | 7       | 72      | 713      | 145      | 556     | 12       |
|                                   | 2007     | 774    | 85      | 1       | 18      | 9       | 57      | 689      | 123      | 560     | 6        |
|                                   | % change | -8.5%  | -36.1%  |         | -66.7%  | 28.6%   | -20.8%  | -3.4%    | -15.2%   | 0.7%    | -50.0%   |
| Suffolk<br>( 98.7% coverage)      | 2006     | 14,410 | 1,447   | 17      | 52      | 528     | 850     | 12,963   | 1,833    | 9,991   | 1,139    |
|                                   | 2007     | 13,981 | 1,249   | 13      | 51      | 455     | 730     | 12,732   | 1,721    | 9,921   | 1,090    |
|                                   | % change | -3.0%  | -13.7%  | -23.5%  | -1.9%   | -13.8%  | -14.1%  | -1.8%    | -6.1%    | -0.7%   | -4.3%    |
| Sullivan<br>( 100.0% coverage)    | 2006     | 938    | 146     | 2       | 13      | 26      | 105     | 792      | 242      | 508     | 42       |
|                                   | 2007     | 968    | 145     | 0       | 8       | 22      | 115     | 823      | 187      | 578     | 58       |
|                                   | % change | 3.2%   | -0.7%   | -100.0% | -38.5%  | -15.4%  | 9.5%    | 3.9%     | -22.7%   | 13.8%   | 38.1%    |
| Tioga<br>( 100.0% coverage)       | 2006     | 286    | 21      | 0       | 4       | 0       | 17      | 265      | 71       | 177     | 17       |
|                                   | 2007     | 254    | 19      | 0       | 2       | 1       | 16      | 235      | 49       | 176     | 10       |
|                                   | % change | -11.2% | -9.5%   |         | -50.0%  |         | -5.9%   | -11.3%   | -31.0%   | -0.6%   | -41.2%   |
| Tompkins<br>( 97.8% coverage)     | 2006     | 1,267  | 78      | 0       | 15      | 10      | 53      | 1,189    | 149      | 1,000   | 40       |
|                                   | 2007     | 1,112  | 46      | 0       | 7       | 10      | 29      | 1,066    | 130      | 914     | 22       |
|                                   | % change | -12.2% | -41.0%  |         | -53.3%  | 0.0%    | -45.3%  | -10.3%   | -12.8%   | -8.6%   | -45.0%   |
| Ulster<br>( 98.0% coverage)       | 2006     | 1,855  | 259     | 1       | 28      | 45      | 185     | 1,596    | 281      | 1,255   | 60       |
|                                   | 2007     | 1,600  | 223     | 1       | 19      | 33      | 170     | 1,377    | 286      | 1,014   | 77       |
|                                   | % change | -13.7% | -13.9%  | 0.0%    | -32.1%  | -26.7%  | -8.1%   | -13.7%   | 1.8%     | -19.2%  | 28.3%    |

Table 2  
Uniform Crime/Incident-Based Reporting  
Index Crime Summary  
January - June 2006 vs. 2007

(includes only agencies with 6 months complete reporting for both years as of 12/14/07)

| County                           | Jan-June | Total         | Violent       | Murder  | Rape   | Robbery | Agg.<br>Assault | Property      | Burglary | Larceny | MV<br>Theft |
|----------------------------------|----------|---------------|---------------|---------|--------|---------|-----------------|---------------|----------|---------|-------------|
| Warren<br>( 100.0% coverage)     | 2006     | <b>781</b>    | <b>69</b>     | 1       | 12     | 7       | 49              | <b>712</b>    | 123      | 576     | 13          |
|                                  | 2007     | <b>724</b>    | <b>60</b>     | 1       | 8      | 3       | 48              | <b>664</b>    | 99       | 552     | 13          |
|                                  | % change | <b>-7.3%</b>  | <b>-13.0%</b> | 0.0%    | -33.3% | -57.1%  | -2.0%           | <b>-6.7%</b>  | -19.5%   | -4.2%   | 0.0%        |
| Washington<br>( 100.0% coverage) | 2006     | <b>475</b>    | <b>41</b>     | 0       | 9      | 0       | 32              | <b>434</b>    | 134      | 280     | 20          |
|                                  | 2007     | <b>489</b>    | <b>79</b>     | 3       | 15     | 1       | 60              | <b>410</b>    | 81       | 308     | 21          |
|                                  | % change | <b>2.9%</b>   | <b>92.7%</b>  |         | 66.7%  |         | 87.5%           | <b>-5.5%</b>  | -39.6%   | 10.0%   | 5.0%        |
| Wayne<br>( 97.6% coverage)       | 2006     | <b>1,085</b>  | <b>88</b>     | 0       | 12     | 15      | 61              | <b>997</b>    | 253      | 702     | 42          |
|                                  | 2007     | <b>733</b>    | <b>71</b>     | 0       | 11     | 8       | 52              | <b>662</b>    | 118      | 524     | 20          |
|                                  | % change | <b>-32.4%</b> | <b>-19.3%</b> |         | -8.3%  | -46.7%  | -14.8%          | <b>-33.6%</b> | -53.4%   | -25.4%  | -52.4%      |
| Westchester<br>( 95.7% coverage) | 2006     | <b>8,050</b>  | <b>1,342</b>  | 11      | 38     | 653     | 640             | <b>6,708</b>  | 998      | 5,197   | 513         |
|                                  | 2007     | <b>7,324</b>  | <b>1,179</b>  | 14      | 47     | 458     | 660             | <b>6,145</b>  | 988      | 4,714   | 443         |
|                                  | % change | <b>-9.0%</b>  | <b>-12.1%</b> | 27.3%   | 23.7%  | -29.9%  | 3.1%            | <b>-8.4%</b>  | -1.0%    | -9.3%   | -13.6%      |
| Wyoming<br>( 100.0% coverage)    | 2006     | <b>318</b>    | <b>38</b>     | 1       | 4      | 1       | 32              | <b>280</b>    | 69       | 197     | 14          |
|                                  | 2007     | <b>311</b>    | <b>35</b>     | 0       | 5      | 1       | 29              | <b>276</b>    | 53       | 211     | 12          |
|                                  | % change | <b>-2.2%</b>  | <b>-7.9%</b>  | -100.0% | 25.0%  | 0.0%    | -9.4%           | <b>-1.4%</b>  | -23.2%   | 7.1%    | -14.3%      |
| Yates<br>( 100.0% coverage)      | 2006     | <b>156</b>    | <b>14</b>     | 0       | 2      | 2       | 10              | <b>142</b>    | 31       | 110     | 1           |
|                                  | 2007     | <b>148</b>    | <b>5</b>      | 0       | 2      | 0       | 3               | <b>143</b>    | 29       | 111     | 3           |
|                                  | % change | <b>-5.1%</b>  | <b>-64.3%</b> |         | 0.0%   | -100.0% | -70.0%          | <b>0.7%</b>   | -6.5%    | 0.9%    | 200.0%      |

Table 3  
Uniform Crime/Incident-Based Reporting

Index Crime Summary for IMPACT Agencies  
January - June 2006 vs. 2007

| PD                    | Jan-June | Total  | Violent | Murder  | Rape   | Robbery | Agg.<br>Assault | Property | Burglary | Larceny | MV<br>Theft |
|-----------------------|----------|--------|---------|---------|--------|---------|-----------------|----------|----------|---------|-------------|
| Albany City PD        | 2006     | 2,904  | 586     | 4       | 23     | 179     | 380             | 2,318    | 482      | 1,704   | 132         |
|                       | 2007     | 2,553  | 560     | 0       | 28     | 179     | 353             | 1,993    | 477      | 1,372   | 144         |
|                       | % change | -12.1% | -4.4%   | -100.0% | 21.7%  | 0.0%    | -7.1%           | -14.0%   | -1.0%    | -19.5%  | 9.1%        |
| Binghamton City PD    | 2006     | 1,111  | 80      | 0       | 4      | 25      | 51              | 1,031    | 142      | 879     | 10          |
|                       | 2007     | 1,167  | 97      | 2       | 10     | 31      | 54              | 1,070    | 134      | 917     | 19          |
|                       | % change | 5.0%   | 21.3%   |         | 150.0% | 24.0%   | 5.9%            | 3.8%     | -5.6%    | 4.3%    | 90.0%       |
| Buffalo City PD       | 2006     | 8,928  | 2,024   | 31      | 91     | 868     | 1,034           | 6,904    | 1,993    | 3,874   | 1,037       |
|                       | 2007     | 8,964  | 1,630   | 22      | 81     | 678     | 849             | 7,334    | 1,935    | 4,354   | 1,045       |
|                       | % change | 0.4%   | -19.5%  | -29.0%  | -11.0% | -21.9%  | -17.9%          | 6.2%     | -2.9%    | 12.4%   | 0.8%        |
| Jamestown City PD     | 2006     | 640    | 76      | 0       | 10     | 12      | 54              | 564      | 175      | 363     | 26          |
|                       | 2007     | 575    | 80      | 1       | 12     | 16      | 51              | 495      | 135      | 340     | 20          |
|                       | % change | -10.2% | 5.3%    |         | 20.0%  | 33.3%   | -5.6%           | -12.2%   | -22.9%   | -6.3%   | -23.1%      |
| Kingston City PD      | 2006     | 419    | 48      | 0       | 4      | 26      | 18              | 371      | 59       | 299     | 13          |
|                       | 2007     | 371    | 39      | 1       | 3      | 23      | 12              | 332      | 63       | 254     | 15          |
|                       | % change | -11.5% | -18.8%  |         | -25.0% | -11.5%  | -33.3%          | -10.5%   | 6.8%     | -15.1%  | 15.4%       |
| Nassau County PD      | 2006     | 7,644  | 899     | 3       | 37     | 426     | 433             | 6,745    | 1,040    | 5,135   | 570         |
|                       | 2007     | 7,278  | 797     | 5       | 35     | 360     | 397             | 6,481    | 920      | 5,050   | 511         |
|                       | % change | -4.8%  | -11.3%  | 66.7%   | -5.4%  | -15.5%  | -8.3%           | -3.9%    | -11.5%   | -1.7%   | -10.4%      |
| Newburgh City PD      | 2006     | 702    | 186     | 1       | 5      | 66      | 114             | 516      | 126      | 348     | 42          |
|                       | 2007     | 856    | 218     | 0       | 8      | 67      | 143             | 638      | 166      | 444     | 28          |
|                       | % change | 21.9%  | 17.2%   | -100.0% | 60.0%  | 1.5%    | 25.4%           | 23.6%    | 31.7%    | 27.6%   | -33.3%      |
| Niagara Falls City PD | 2006     | 1,620  | 305     | 2       | 16     | 88      | 199             | 1,315    | 346      | 859     | 110         |
|                       | 2007     | 1,489  | 249     | 1       | 17     | 62      | 169             | 1,240    | 296      | 837     | 107         |
|                       | % change | -8.1%  | -18.4%  | -50.0%  | 6.3%   | -29.5%  | -15.1%          | -5.7%    | -14.5%   | -2.6%   | -2.7%       |
| Poughkeepsie City PD  | 2006     | 681    | 190     | 2       | 7      | 72      | 109             | 491      | 100      | 352     | 39          |
|                       | 2007     | 616    | 175     | 2       | 8      | 70      | 95              | 441      | 97       | 301     | 43          |
|                       | % change | -9.5%  | -7.9%   | 0.0%    | 14.3%  | -2.8%   | -12.8%          | -10.2%   | -3.0%    | -14.5%  | 10.3%       |
| Rochester City PD     | 2006     | 7,455  | 1,242   | 19      | 46     | 620     | 557             | 6,213    | 1,119    | 3,847   | 1,247       |
|                       | 2007     | 6,187  | 1,086   | 27      | 50     | 431     | 578             | 5,101    | 1,032    | 3,201   | 868         |
|                       | % change | -17.0% | -12.6%  | 42.1%   | 8.7%   | -30.5%  | 3.8%            | -17.9%   | -7.8%    | -16.8%  | -30.4%      |
| Schenectady City PD   | 2006     | 2,000  | 356     | 3       | 25     | 136     | 192             | 1,644    | 491      | 991     | 162         |
|                       | 2007     | 1,708  | 293     | 2       | 20     | 120     | 151             | 1,415    | 381      | 883     | 151         |
|                       | % change | -14.6% | -17.7%  | -33.3%  | -20.0% | -11.8%  | -21.4%          | -13.9%   | -22.4%   | -10.9%  | -6.8%       |
| Spring Valley Vg PD   | 2006     | 265    | 79      | 0       | 4      | 20      | 55              | 186      | 47       | 116     | 23          |
|                       | 2007     | 295    | 99      | 0       | 9      | 36      | 54              | 196      | 33       | 148     | 15          |
|                       | % change | 11.3%  | 25.3%   |         | 125.0% | 80.0%   | -1.8%           | 5.4%     | -29.8%   | 27.6%   | -34.8%      |
| Suffolk County PD     | 2006     | 12,243 | 1,165   | 17      | 43     | 480     | 625             | 11,078   | 1,469    | 8,536   | 1,073       |
|                       | 2007     | 12,066 | 1,054   | 13      | 41     | 419     | 581             | 11,012   | 1,432    | 8,553   | 1,027       |
|                       | % change | -1.4%  | -9.5%   | -23.5%  | -4.7%  | -12.7%  | -7.0%           | -0.6%    | -2.5%    | 0.2%    | -4.3%       |
| Syracuse City PD      | 2006     | 4,003  | 779     | 10      | 35     | 259     | 475             | 3,224    | 842      | 2,006   | 376         |
|                       | 2007     | 3,407  | 676     | 9       | 31     | 200     | 436             | 2,731    | 787      | 1,685   | 259         |
|                       | % change | -14.9% | -13.2%  | -10.0%  | -11.4% | -22.8%  | -8.2%           | -15.3%   | -6.5%    | -16.0%  | -31.1%      |

Table 3  
Uniform Crime/Incident-Based Reporting

Index Crime Summary for IMPACT Agencies  
January - June 2006 vs. 2007

| PD                  | Jan-June | Total         | Violent       | Murder     | Rape       | Robbery      | Agg.<br>Assault | Property      | Burglary     | Larceny       | MV<br>Theft  |
|---------------------|----------|---------------|---------------|------------|------------|--------------|-----------------|---------------|--------------|---------------|--------------|
| Troy City PD        | 2006     | <b>1,186</b>  | <b>169</b>    | 1          | 12         | 56           | 100             | <b>1,017</b>  | 242          | 684           | 91           |
|                     | 2007     | <b>1,207</b>  | <b>179</b>    | 2          | 11         | 66           | 100             | <b>1,028</b>  | 251          | 682           | 95           |
|                     | % change | <b>1.8%</b>   | <b>5.9%</b>   | 100.0%     | -8.3%      | 17.9%        | 0.0%            | <b>1.1%</b>   | 3.7%         | -0.3%         | 4.4%         |
| Utica City PD       | 2006     | <b>1,428</b>  | <b>210</b>    | 2          | 12         | 65           | 131             | <b>1,218</b>  | 332          | 822           | 64           |
|                     | 2007     | <b>1,461</b>  | <b>207</b>    | 1          | 13         | 60           | 133             | <b>1,254</b>  | 323          | 847           | 84           |
|                     | % change | <b>2.3%</b>   | <b>-1.4%</b>  | -50.0%     | 8.3%       | -7.7%        | 1.5%            | <b>3.0%</b>   | -2.7%        | 3.0%          | 31.3%        |
| Yonkers City PD     | 2006     | <b>2,162</b>  | <b>487</b>    | 5          | 11         | 234          | 237             | <b>1,675</b>  | 302          | 1,159         | 214          |
|                     | 2007     | <b>1,708</b>  | <b>396</b>    | 5          | 21         | 155          | 215             | <b>1,312</b>  | 288          | 864           | 160          |
|                     | % change | <b>-21.0%</b> | <b>-18.7%</b> | 0.0%       | 90.9%      | -33.8%       | -9.3%           | <b>-21.7%</b> | -4.6%        | -25.5%        | -25.2%       |
| All IMPACT Agencies | 2006     | <b>55,391</b> | <b>8,881</b>  | <b>100</b> | <b>385</b> | <b>3,632</b> | <b>4,764</b>    | <b>46,510</b> | <b>9,307</b> | <b>31,974</b> | <b>5,229</b> |
|                     | 2007     | <b>51,908</b> | <b>7,835</b>  | <b>93</b>  | <b>398</b> | <b>2,973</b> | <b>4,371</b>    | <b>44,073</b> | <b>8,750</b> | <b>30,732</b> | <b>4,591</b> |
|                     | % change | <b>-6.3%</b>  | <b>-11.8%</b> | -7.0%      | 3.4%       | -18.1%       | -8.2%           | <b>-5.2%</b>  | -6.0%        | -3.9%         | -12.2%       |

Source: Uniform Crime/Incident Based Reporting systems (as of 12/14/07).