



# New York State Crime Report

David A. Paterson, Governor

Denise E. O'Donnell, Commissioner

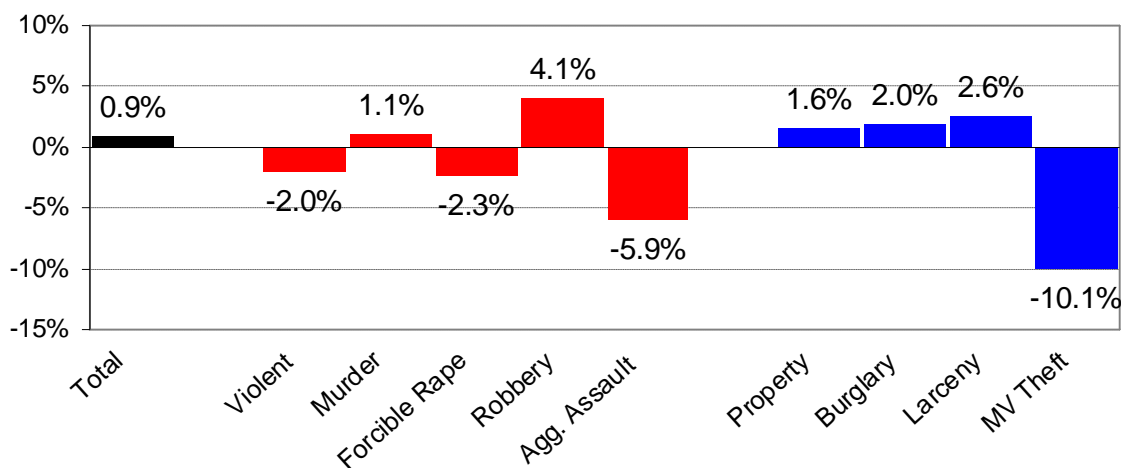
## Preliminary New York State Crime Update January - June 2008 vs. 2007

This report provides the most recent information available on the number of Index crimes of murder, forcible rape, robbery, aggravated assault, burglary, larceny and motor vehicle theft reported within New York State. These figures include all agencies with complete reporting as of October 8, 2008, and represent approximately 98 percent of crime data for the first half of 2008. All data are preliminary and subject to change.

Detailed information on crime data for each reporting agency from 2003 through 2007 is available on the DCJS website: <http://criminaljustice.state.ny.us/crimnet/ojsa/indexcrimes/counties.htm>

Figure 1

### New York State Percentage Change in Index Crimes January - June 2008 vs. 2007



- Figure 1 above shows that Index crime in New York State rose just under 1 percent during the first six months of 2008 compared with the same period of 2007. Violent crimes were down 2 percent while property crimes increased almost 2 percent. The largest increase was reported in robberies (+4%) while the largest decrease was in motor vehicle thefts (-10%).

Table 1  
New York State Index Crime Summary by Region  
January - June 2007 vs. 2008

Region	Jan-Jun	Total	Forcible					Agg. Assault	Property	Burglary	Larceny	MV Theft
			Violent	Murder	Rape	Robbery						
New York City (100.0% coverage)	2007	94,772	23,887	235	420	9,759	13,473	70,885	9,786	54,864	6,235	
	2008	93,925	23,556	252	484	10,205	12,615	70,369	9,051	55,636	5,682	
	% change	-0.9%	-1.4%	7.2%	15.2%	4.6%	-6.4%	-0.7%	-7.5%	1.4%	-8.9%	
Non- New York City (96.0% coverage)	2007	114,782	13,917	142	1,002	4,169	8,604	100,865	18,658	75,349	6,858	
	2008	117,584	13,497	129	905	4,293	8,170	104,087	19,958	78,034	6,095	
	% change	2.4%	-3.0%	-9.2%	-9.7%	3.0%	-5.0%	3.2%	7.0%	3.6%	-11.1%	
New York State (97.8% coverage)	2007	209,880	37,855	377	1,422	13,954	22,102	172,025	28,452	130,476	13,097	
	2008	211,828	37,097	381	1,389	14,525	20,802	174,731	29,021	133,932	11,778	
	% change	0.9%	-2.0%	1.1%	-2.3%	4.1%	-5.9%	1.6%	2.0%	2.6%	-10.1%	

## Notes:

Includes only agencies with 6 months complete reporting for both years as of 10/8/08.

Coverage refers to the proportion of 2007 Index crimes the included agencies represented.

The New York State total includes Index crimes reported by the Metropolitan Transit Authority (MTA) whose jurisdiction covers both regions of the State. MTA's counts are not included in either region because they report through a central unit.

Source: DCJS, Uniform Crime/Incident-Based Reporting systems.

- Table 1 shows the number of reported Index crimes by region. New York City reported declines of approximately 1 percent in both violent and property crimes. Increases were reported in murders, forcible rapes, robberies, and larcenies, while aggravated assaults, burglaries and motor vehicle thefts declined.
- Table 1 also shows that an estimated 96 percent of crime reports have been received by Non-New York City counties for the first six months of 2008. These counties reported a 3 percent drop in violent crimes and a 3 percent increase in property crimes. Increases were reported in robberies, burglaries and larcenies, while murders, forcible rapes, aggravated assaults and motor vehicle thefts declined.
- Table 2 provides the number of reported Index crimes for each county. A total of 24 counties reported a decrease in overall crime, and 38 reported a decrease in violent crime.
- Table 3 provides an Index crime summary for the 17 primary Operation IMPACT jurisdictions. Among IMPACT jurisdictions, violent crimes increased less than 1 percent while property crimes rose almost 5 percent. The largest increase was in burglaries (+10%) and the largest decrease was in motor vehicle thefts (-13%).

Table 2  
Index Crime Summary by County for Non- New York City Region  
January - June 2007 vs. 2008

County	Jan- Jun	Total	Forcible					Agg. Assault	Property	Burglary	Larceny	MV Theft
			Violent	Murder	Rape	Robbery						
Non-New York City (96.0% coverage)	2007	114,782	13,917	142	1,002	4,169	8,604	100,865	18,658	75,349	6,858	
	2008	117,584	13,497	129	905	4,293	8,170	104,087	19,958	78,034	6,095	
	% Change	2.4%	- 3.0%	-9.2%	-9.7%	3.0%	-5.0%	3.2%	7.0%	3.6%	-11.1%	
Albany (97.2% coverage)	2007	4,939	728	2	38	207	481	4,211	732	3,267	212	
	2008	4,838	660	6	26	219	409	4,178	784	3,211	183	
	% Change	- 2.0%	- 9.3%	200.0%	-31.6%	5.8%	-15.0%	- 0.8%	7.1%	-1.7%	-13.7%	
Allegany (87.6% coverage)	2007	273	44	0	3	1	40	229	72	148	9	
	2008	262	43	0	4	1	38	219	73	137	9	
	% Change	- 4.0%	- 2.3%	NA	33.3%	0.0%	-5.0%	- 4.4%	1.4%	-7.4%	0.0%	
Broome (82.9% coverage)	2007	2,428	186	2	20	49	115	2,242	292	1,904	46	
	2008	2,467	244	1	44	58	141	2,223	334	1,848	41	
	% Change	1.6%	31.2%	-50.0%	120.0%	18.4%	22.6%	- 0.8%	14.4%	-2.9%	-10.9%	
Cattaraugus (98.1% coverage)	2007	935	90	0	10	15	65	845	194	619	32	
	2008	923	124	1	13	12	98	799	177	602	20	
	% Change	- 1.3%	37.8%	NA	30.0%	-20.0%	50.8%	- 5.4%	-8.8%	-2.7%	-37.5%	
Cayuga (100% coverage)	2007	845	106	0	14	14	78	739	121	595	23	
	2008	888	66	0	6	6	54	822	165	645	12	
	% Change	5.1%	- 37.7%	NA	-57.1%	-57.1%	-30.8%	11.2%	36.4%	8.4%	-47.8%	
Chautauqua (100% coverage)	2007	1,696	174	1	32	23	118	1,522	340	1,140	42	
	2008	1,653	162	0	14	28	120	1,491	368	1,077	46	
	% Change	- 2.5%	- 6.9%	-100.0%	-56.3%	21.7%	1.7%	- 2.0%	8.2%	-5.5%	9.5%	
Chemung (99.5% coverage)	2007	1,161	91	1	6	14	70	1,070	182	856	32	
	2008	1,121	112	1	8	21	82	1,009	176	812	21	
	% Change	- 3.4%	23.1%	0.0%	33.3%	50.0%	17.1%	- 5.7%	-3.3%	-5.1%	-34.4%	
Chenango (61.6% coverage)	2007	273	20	1	8	0	11	253	42	205	6	
	2008	286	14	0	9	1	4	272	56	211	5	
	% Change	4.8%	- 30.0%	-100.0%	12.5%		-63.6%	7.5%	33.3%	2.9%	-16.7%	
Clinton (100% coverage)	2007	991	134	1	10	6	117	857	207	626	24	
	2008	849	60	0	17	4	39	789	177	592	20	
	% Change	- 14.3%	- 55.2%	-100.0%	70.0%	-33.3%	-66.7%	- 7.9%	-14.5%	-5.4%	-16.7%	
Columbia (100% coverage)	2007	576	66	1	3	7	55	510	117	376	17	
	2008	592	51	2	2	6	41	541	137	397	7	
	% Change	2.8%	- 22.7%	100.0%	-33.3%	-14.3%	-25.5%	6.1%	17.1%	5.6%	-58.8%	
Cortland (95.6% coverage)	2007	578	63	0	8	3	52	515	90	412	13	
	2008	520	58	1	4	7	46	462	98	345	19	
	% Change	- 10.0%	- 7.9%	NA	-50.0%	133.3%	-11.5%	- 10.3%	8.9%	-16.3%	46.2%	
Delaware (77.5% coverage)	2007	322	47	1	5	2	39	275	106	165	4	
	2008	303	30	0	2	1	27	273	76	194	3	
	% Change	- 5.9%	- 36.2%	-100.0%	-60.0%	-50.0%	-30.8%	- 0.7%	-28.3%	17.6%	-25.0%	
Dutchess (84.4% coverage)	2007	2,411	403	8	19	116	260	2,008	271	1,635	102	
	2008	2,673	418	2	21	115	280	2,255	360	1,809	86	
	% Change	10.9%	3.7%	-75.0%	10.5%	-0.9%	7.7%	12.3%	32.8%	10.6%	-15.7%	
Erie (96.9% coverage)	2007	14,911	2,075	25	129	802	1,119	12,836	2,814	8,768	1,254	
	2008	15,221	2,171	19	109	844	1,199	13,050	2,764	9,065	1,221	
	% Change	2.1%	4.6%	-24.0%	-15.5%	5.2%	7.1%	1.7%	-1.8%	3.4%	-2.6%	
Essex (99.6% coverage)	2007	237	44	0	6	0	38	193	55	127	11	
	2008	214	28	0	3	0	25	186	54	131	1	
	% Change	- 9.7%	- 36.4%	NA	-50.0%	NA	-34.2%	- 3.6%	-1.8%	3.1%	-90.9%	

Table 2  
Index Crime Summary by County for Non- New York City Region  
January - June 2007 vs. 2008

County	Jan- Jun	Total	Forcible					Agg. Assault	Property	Burglary	Larceny	MV Theft
			Violent	Murder	Rape	Robbery						
Franklin (100% coverage)	2007	490	82	0	11	0	71	408	142	250	16	
	2008	507	54	0	15	1	38	453	104	342	7	
	% Change	3.5%	- 34.1%	NA	36.4%	NA	-46.5%	11.0%	-26.8%	36.8%	-56.3%	
Fulton (100% coverage)	2007	766	69	1	10	3	55	697	158	516	23	
	2008	718	51	1	7	0	43	667	107	541	19	
	% Change	- 6.3%	- 26.1%	0.0%	-30.0%	-100.0%	-21.8%	- 4.3%	-32.3%	4.8%	-17.4%	
Genesee (100% coverage)	2007	624	42	0	8	4	30	582	96	472	14	
	2008	585	51	2	6	8	35	534	117	399	18	
	% Change	- 6.3%	21.4%	NA	-25.0%	100.0%	16.7%	- 8.2%	21.9%	-15.5%	28.6%	
Greene (99.6% coverage)	2007	489	88	0	9	2	77	401	107	280	14	
	2008	710	68	0	0	3	65	642	122	499	21	
	% Change	45.2%	- 22.7%	NA	-100.0%	50.0%	-15.6%	60.1%	14.0%	78.2%	50.0%	
Hamilton (69.8% coverage)	2007	15	1	0	0	0	1	14	10	4	0	
	2008	8	0	0	0	0	0	8	1	7	0	
	% Change	- 46.7%	- 100.0%	NA	NA	NA	-100.0%	- 42.9%	-90.0%	75.0%		
Herkimer (88.9% coverage)	2007	523	81	0	6	3	72	442	127	308	7	
	2008	563	101	0	8	6	87	462	95	358	9	
	% Change	7.6%	24.7%	NA	33.3%	100.0%	20.8%	4.5%	-25.2%	16.2%	28.6%	
Jefferson (83.4% coverage)	2007	962	134	1	32	14	87	828	152	633	43	
	2008	1,084	105	0	8	10	87	979	149	776	54	
	% Change	12.7%	- 21.6%	-100.0%	-75.0%	-28.6%	0.0%	18.2%	-2.0%	22.6%	25.6%	
Lewis (100% coverage)	2007	211	48	0	36	0	12	163	59	102	2	
	2008	218	20	0	2	1	17	198	76	114	8	
	% Change	3.3%	- 58.3%	NA	-94.4%	NA	41.7%	21.5%	28.8%	11.8%	300.0%	
Livingston (97% coverage)	2007	754	28	0	7	1	20	726	85	630	11	
	2008	525	33	0	7	3	23	492	82	405	5	
	% Change	- 30.4%	17.9%	NA	0.0%	200.0%	15.0%	- 32.2%	-3.5%	-35.7%	-54.5%	
Madison (85.8% coverage)	2007	550	30	0	7	1	22	520	118	388	14	
	2008	584	30	0	6	4	20	554	126	418	10	
	% Change	6.2%	0.0%	NA	-14.3%	300.0%	-9.1%	6.5%	6.8%	7.7%	-28.6%	
Monroe (100% coverage)	2007	11,329	1,360	27	70	507	756	9,969	1,788	7,090	1,091	
	2008	11,170	1,354	16	77	575	686	9,816	1,872	7,125	819	
	% Change	- 1.4%	- 0.4%	-40.7%	10.0%	13.4%	-9.3%	- 1.5%	4.7%	0.5%	-24.9%	
Montgomery (92.6% coverage)	2007	337	53	1	1	0	51	284	59	214	11	
	2008	358	66	1	1	3	61	292	80	201	11	
	% Change	6.2%	24.5%	0.0%	0.0%	NA	19.6%	2.8%	35.6%	-6.1%	0.0%	
Nassau (98.4% coverage)	2007	9,152	1,111	7	46	486	572	8,041	1,178	6,177	686	
	2008	9,832	1,093	16	39	524	514	8,739	1,192	6,889	658	
	% Change	7.4%	- 1.6%	128.6%	-15.2%	7.8%	-10.1%	8.7%	1.2%	11.5%	-4.1%	
Niagara (95.6% coverage)	2007	3,050	366	1	33	95	237	2,684	616	1,890	178	
	2008	3,208	346	1	16	92	237	2,862	724	2,005	133	
	% Change	5.2%	- 5.5%	0.0%	-51.5%	-3.2%	0.0%	6.6%	17.5%	6.1%	-25.3%	
Oneida (98.6% coverage)	2007	2,985	339	5	20	68	246	2,646	636	1,886	124	
	2008	3,139	353	6	29	107	211	2,786	677	2,010	99	
	% Change	5.2%	4.1%	20.0%	45.0%	57.4%	-14.2%	5.3%	6.4%	6.6%	-20.2%	
Onondaga (98.2% coverage)	2007	5,824	857	11	47	236	563	4,967	1,135	3,478	354	
	2008	6,224	851	8	62	231	550	5,373	1,284	3,712	377	
	% Change	6.9%	- 0.7%	-27.3%	31.9%	-2.1%	-2.3%	8.2%	13.1%	6.7%	6.5%	

Table 2  
Index Crime Summary by County for Non- New York City Region  
January - June 2007 vs. 2008

County	Jan- Jun	Total	Forcible					Agg. Assault	Property	Burglary	Larceny	MV Theft
			Violent	Murder	Rape	Robbery						
Ontario (87.4% coverage)	2007	732	40	0	5	4	31	692	146	523	23	
	2008	770	40	0	9	11	20	730	126	584	20	
	% Change	5.2%	0.0%	NA	80.0%	175.0%	-35.5%	5.5%	-13.7%	11.7%	-13.0%	
Orange (90.1% coverage)	2007	3,794	493	2	38	150	303	3,301	518	2,659	124	
	2008	3,895	454	6	31	141	276	3,441	562	2,734	145	
	% Change	2.7%	-7.9%	200.0%	-18.4%	-6.0%	-8.9%	4.2%	8.5%	2.8%	16.9%	
Orleans (91.5% coverage)	2007	441	44	1	2	5	36	397	83	296	18	
	2008	471	33	1	5	9	18	438	105	307	26	
	% Change	6.8%	-25.0%	0.0%	150.0%	80.0%	-50.0%	10.3%	26.5%	3.7%	44.4%	
Oswego (79.4% coverage)	2007	972	73	0	9	12	52	899	210	666	23	
	2008	974	88	0	14	9	65	886	229	629	28	
	% Change	0.2%	20.5%	NA	55.6%	-25.0%	25.0%	-1.4%	9.0%	-5.6%	21.7%	
Otsego (93% coverage)	2007	523	49	1	7	3	38	474	138	323	13	
	2008	515	43	0	3	3	37	472	140	321	11	
	% Change	-1.5%	-12.2%	-100.0%	-57.1%	0.0%	-2.6%	-0.4%	1.4%	-0.6%	-15.4%	
Putnam (100% coverage)	2007	434	35	3	5	5	22	399	60	319	20	
	2008	507	47	1	5	7	34	460	86	357	17	
	% Change	16.8%	34.3%	-66.7%	0.0%	40.0%	54.5%	15.3%	43.3%	11.9%	-15.0%	
Rensselaer (97.2% coverage)	2007	2,047	261	2	22	82	155	1,786	405	1,258	123	
	2008	2,106	259	4	23	91	141	1,847	401	1,369	77	
	% Change	2.9%	-0.8%	100.0%	4.5%	11.0%	-9.0%	3.4%	-1.0%	8.8%	-37.4%	
Rockland (100% coverage)	2007	2,098	263	1	17	81	164	1,835	235	1,510	90	
	2008	2,376	261	1	10	79	171	2,115	262	1,789	64	
	% Change	13.3%	-0.8%	0.0%	-41.2%	-2.5%	4.3%	15.3%	11.5%	18.5%	-28.9%	
Saratoga (96.9% coverage)	2007	1,291	87	0	16	11	60	1,204	215	946	43	
	2008	1,292	71	0	11	4	56	1,221	203	981	37	
	% Change	0.1%	-18.4%	NA	-31.3%	-63.6%	-6.7%	1.4%	-5.6%	3.7%	-14.0%	
Schenectady (100% coverage)	2007	2,558	331	2	22	132	175	2,227	501	1,545	181	
	2008	2,627	307	4	20	109	174	2,320	503	1,671	146	
	% Change	2.7%	-7.3%	100.0%	-9.1%	-17.4%	-0.6%	4.2%	0.4%	8.2%	-19.3%	
Schoharie (82.9% coverage)	2007	180	11	0	1	1	9	169	42	121	6	
	2008	222	14	0	1	1	12	208	64	137	7	
	% Change	23.3%	27.3%	NA	0.0%	0.0%	33.3%	23.1%	52.4%	13.2%	16.7%	
Schuyler (100% coverage)	2007	72	4	0	0	0	4	68	16	49	3	
	2008	92	7	0	1	1	5	85	21	62	2	
	% Change	27.8%	75.0%	NA	NA	NA	25.0%	25.0%	31.3%	26.5%	-33.3%	
Seneca (100% coverage)	2007	239	16	0	1	1	14	223	25	193	5	
	2008	279	23	0	5	2	16	256	38	206	12	
	% Change	16.7%	43.8%	NA	400.0%	100.0%	14.3%	14.8%	52.0%	6.7%	140.0%	
St. Lawrence (91% coverage)	2007	949	77	1	11	3	62	872	161	695	16	
	2008	938	111	0	8	2	101	827	165	644	18	
	% Change	-1.2%	44.2%	-100.0%	-27.3%	-33.3%	62.9%	-5.2%	2.5%	-7.3%	12.5%	
Steu ben (100.4% coverage)	2007	779	86	2	18	9	57	693	124	563	6	
	2008	737	79	0	20	3	56	658	132	510	16	
	% Change	-5.4%	-8.1%	-100.0%	11.1%	-66.7%	-1.8%	-5.1%	6.5%	-9.4%	166.7%	
Suffolk (96.2% coverage)	2007	13,534	1,244	13	51	455	725	12,290	1,690	9,514	1,086	
	2008	14,152	1,090	13	43	378	656	13,062	2,072	9,990	1,000	
	% Change	4.6%	-12.4%	0.0%	-15.7%	-16.9%	-9.5%	6.3%	22.6%	5.0%	-7.9%	

Table 2  
Index Crime Summary by County for Non- New York City Region  
January - June 2007 vs. 2008

County	Jan- Jun	Total	Forcible				Agg. Assault	Property	Burglary	Larceny	MV Theft
			Violent	Murder	Rape	Robbery					
Sullivan (99.7% coverage)	2007	966	145	0	8	22	115	821	187	576	58
	2008	881	99	1	13	13	72	782	252	501	29
	% Change	- 8.8%	- 31.7%	NA	62.5%	-40.9%	-37.4%	- 4.8%	34.8%	-13.0%	-50.0%
Tioga (100% coverage)	2007	257	20	0	2	1	17	237	48	178	11
	2008	213	17	0	7	0	10	196	40	148	8
	% Change	- 17.1%	- 15.0%	NA	250.0%	-100.0%	-41.2%	- 17.3%	-16.7%	-16.9%	-27.3%
Tompkins (99.5% coverage)	2007	1,132	49	0	7	11	31	1,083	128	932	23
	2008	1,125	70	1	10	20	39	1,055	198	839	18
	% Change	- 0.6%	42.9%	NA	42.9%	81.8%	25.8%	- 2.6%	54.7%	-10.0%	-21.7%
Ulster (89.6% coverage)	2007	1,429	204	1	19	29	155	1,225	253	905	67
	2008	1,481	196	3	23	21	149	1,285	333	901	51
	% Change	3.6%	- 3.9%	200.0%	21.1%	-27.6%	-3.9%	4.9%	31.6%	-0.4%	-23.9%
Warren (100% coverage)	2007	724	60	1	8	3	48	664	99	552	13
	2008	623	60	0	15	3	42	563	68	488	7
	% Change	- 14.0%	0.0%	-100.0%	87.5%	0.0%	-12.5%	- 15.2%	-31.3%	-11.6%	-46.2%
Washington (100% coverage)	2007	491	79	3	15	1	60	412	82	309	21
	2008	416	56	0	8	2	46	360	74	275	11
	% Change	- 15.3%	- 29.1%	-100.0%	-46.7%	100.0%	-23.3%	- 12.6%	-9.8%	-11.0%	-47.6%
Wayne (97.2% coverage)	2007	737	72	0	11	8	53	665	124	521	20
	2008	949	99	0	13	14	72	850	192	630	28
	% Change	28.8%	37.5%	NA	18.2%	75.0%	35.8%	27.8%	54.8%	20.9%	40.0%
Westchester (98.0% coverage)	2007	7,483	1,193	12	47	462	672	6,290	1,008	4,845	437
	2008	7,548	1,137	10	38	480	609	6,411	1,054	4,983	374
	% Change	0.9%	- 4.7%	-16.7%	-19.1%	3.9%	-9.4%	1.9%	4.6%	2.8%	-14.4%
Wyoming (90.3% coverage)	2007	279	28	0	4	1	23	251	48	191	12
	2008	206	25	0	3	0	22	181	44	132	5
	% Change	- 26.2%	- 10.7%	NA	-25.0%	-100.0%	-4.3%	- 27.9%	-8.3%	-30.9%	-58.3%
Yates (100% coverage)	2007	148	5	0	2	0	3	143	29	111	3
	2008	104	8	0	2	2	4	96	24	71	1
	% Change	- 29.7%	60.0%	NA	0.0%	NA	33.3%	- 32.9%	-17.2%	-36.0%	-66.7%

## Notes:

Includes only agencies with 6 months complete reporting for both years as of 10/8/08.

Percentage change is not applicable if the count in 2007 was zero.

Coverage refers to the proportion of 2007 Index crimes the included agencies represented.

Source: DCJS, Uniform Crime/Incident-Based Reporting systems.

Table 3  
Index Crime Summary for IMPACT Agencies  
January - June 2007 vs. 2008

PD	Jan-June	Total	Forcible					Agg. Assault	MV		
			Violent	Murder	Rape	Robbery	Property		Burglary	Larceny	Theft
All IMPACT Agencies	2007	51,911	7,837	93	398	2,973	4,373	44,074	8,750	30,734	4,590
	2008	53,979	7,899	92	358	3,120	4,329	46,080	9,646	32,447	3,987
	% Change	4.0%	0.8%	-1.1%	-10.1%	4.9%	-1.0%	4.6%	10.2%	5.6%	-13.1%
Albany City PD	2007	2,551	560	0	28	179	353	1,991	477	1,370	144
	2008	2,660	532	6	19	175	332	2,128	518	1,485	125
	% Change	4.3%	-5.0%	NA	-32.1%	-2.2%	-5.9%	6.9%	8.6%	8.4%	-13.2%
Binghamton City PD	2007	1,167	97	2	10	31	54	1,070	134	917	19
	2008	1,101	125	1	5	36	83	976	137	825	14
	% Change	-5.7%	28.9%	-50.0%	-50.0%	16.1%	53.7%	-8.8%	2.2%	-10.0%	-26.3%
Buffalo City PD	2007	8,963	1,630	22	81	678	849	7,333	1,935	4,354	1,044
	2008	9,232	1,719	19	79	730	891	7,513	1,902	4,632	979
	% Change	3.0%	5.5%	-13.6%	-2.5%	7.7%	4.9%	2.5%	-1.7%	6.4%	-6.2%
Jamestown City PD	2007	576	80	1	12	16	51	496	135	341	20
	2008	632	99	0	7	21	71	533	161	359	13
	% Change	9.7%	23.8%	-100.0%	-41.7%	31.3%	39.2%	7.5%	19.3%	5.3%	-35.0%
Kingston City PD	2007	371	39	1	3	23	12	332	63	254	15
	2008	263	24	0	3	15	6	239	45	183	11
	% Change	-29.1%	-38.5%	-100.0%	0.0%	-34.8%	-50.0%	-28.0%	-28.6%	-28.0%	-26.7%
Nassau County PD	2007	7,278	797	5	35	360	397	6,481	920	5,050	511
	2008	8,002	809	8	32	370	399	7,193	917	5,809	467
	% Change	9.9%	1.5%	60.0%	-8.6%	2.8%	0.5%	11.0%	-0.3%	15.0%	-8.6%
Newburgh City PD	2007	856	218	0	8	67	143	638	166	444	28
	2008	719	214	5	6	70	133	505	147	328	30
	% Change	-16.0%	-1.8%	NA	-25.0%	4.5%	-7.0%	-20.8%	-11.4%	-26.1%	7.1%
Niagara Falls City PD	2007	1,490	250	1	17	62	170	1,240	296	837	107
	2008	1,605	259	1	9	77	172	1,346	370	891	85
	% Change	7.7%	3.6%	0.0%	-47.1%	24.2%	1.2%	8.5%	25.0%	6.5%	-20.6%
Poughkeepsie City PD	2007	616	175	2	8	70	95	441	97	301	43
	2008	767	212	2	11	82	117	555	130	376	49
	% Change	24.5%	21.1%	0.0%	37.5%	17.1%	23.2%	25.9%	34.0%	24.9%	14.0%
Rochester City PD	2007	6,187	1,086	27	50	431	578	5,101	1,032	3,201	868
	2008	6,048	1,067	16	49	492	510	4,981	1,209	3,153	619
	% Change	-2.2%	-1.7%	-40.7%	-2.0%	14.2%	-11.8%	-2.4%	17.2%	-1.5%	-28.7%
Schenectady City PD	2007	1,708	293	2	20	120	151	1,415	381	883	151
	2008	1,738	266	4	15	99	148	1,472	401	950	121
	% Change	1.8%	-9.2%	100.0%	-25.0%	-17.5%	-2.0%	4.0%	5.2%	7.6%	-19.9%
Spring Valley Village PD	2007	296	99	0	9	36	54	197	33	149	15
	2008	338	104	0	3	34	67	234	45	184	5
	% Change	14.2%	5.1%	NA	-66.7%	-5.6%	24.1%	18.8%	36.4%	23.5%	-66.7%
Suffolk County PD	2007	12,066	1,054	13	41	419	581	11,012	1,432	8,553	1,027
	2008	12,517	917	12	34	351	520	11,600	1,810	8,868	922
	% Change	3.7%	-13.0%	-7.7%	-17.1%	-16.2%	-10.5%	5.3%	26.4%	3.7%	-10.2%

Table 3  
Index Crime Summary for IMPACT Agencies  
January - June 2007 vs. 2008

PD	Jan-June	Total	Forcible					Agg. Assault	Property	Burglary	Larceny	MV Theft
			Violent	Murder	Rape	Robbery						
Suffolk County PD	2007	12,066	1,054	13	41	419	581	11,012	1,432	8,553	1,027	
	2008	12,517	917	12	34	351	520	11,600	1,810	8,868	922	
	% Change	3.7%	- 13.0%	-7.7%	-17.1%	-16.2%	-10.5%	5.3%	26.4%	3.7%	-10.2%	
Syracuse City PD	2007	3,407	676	9	31	200	436	2,731	787	1,685	259	
	2008	3,596	666	8	34	196	428	2,930	896	1,754	280	
	% Change	5.5%	- 1.5%	-11.1%	9.7%	-2.0%	-1.8%	7.3%	13.9%	4.1%	8.1%	
Troy City PD	2007	1,207	179	2	11	66	100	1,028	251	682	95	
	2008	1,240	197	4	13	80	100	1,043	251	737	55	
	% Change	2.7%	10.1%	100.0%	18.2%	21.2%	0.0%	1.5%	0.0%	8.1%	-42.1%	
Utica City PD	2007	1,464	208	1	13	60	134	1,256	323	849	84	
	2008	1,639	251	2	13	88	148	1,388	416	919	53	
	% Change	12.0%	20.7%	100.0%	0.0%	46.7%	10.4%	10.5%	28.8%	8.2%	-36.9%	
Yonkers City PD	2007	1,708	396	5	21	155	215	1,312	288	864	160	
	2008	1,882	438	4	26	204	204	1,444	291	994	159	
	% Change	10.2%	10.6%	-20.0%	23.8%	31.6%	-5.1%	10.1%	1.0%	15.0%	-0.6%	

## Note:

Percentage change is not applicable if the count in 2007 was zero.

Source: DCJS, Uniform Crime/Incident-Based Reporting systems.

NYS Division of Criminal Justice Services  
Office of Justice Research and Performance

This report was prepared by Marge Cohen.

For further information, please contact us at: [stats@dcjs.state.ny.us](mailto:stats@dcjs.state.ny.us)  
Additional publications are available at: <http://criminaljustice.state.ny.us>